



# VIBRATING GRIZZLY FEEDERS

Engineers and Manufacturers of Washing, Vibrating and Crushing Equipment

## Description

Trio's heavy duty **Vibrating Grizzly Feeders** have been designed with more than twenty-five years of operating knowledge of vibrating equipment.

Manufactured in a modern facility under the direction of an experienced engineering staff, these units are built for professional quarry and recycling operations. The feeders are available in seven standard lengths and widths and a variety of custom sizes.

The amplitude and motion come from large, twin shaft eccentric heads that utilize extra large bearing assemblies designed to ensure long operating life and maintenance ease.

The feeders are ideal for removing oversize rock and ore from feed material before primary crushing equipment. They are also well suited for stand alone operation in scalping and screening applications.

The feeders are available in single or stepped deck configurations, in lengths ranging from 10' to 24', and widths ranging from 40" to 64".

## Specifications

- Spherical roller bearings
- Bolt-on abrasion resistant liners
- Welded, stress-relieved steel box
- Bolted vibrator assembly
- Eccentric counter-rotating timed vibrator shafts
- Timing gear adjustment for variable feeder throw
- Outboard front spring mountings
- Removable, bolted grizzly section
- Cast or fabricated tapered grizzly bars
- Pivoting motor base
- Oil sight gauge
- Welded spring supports

Distributed by:



## Applications

- Primary Hard Rock
- Concrete
- Crushing
- Surge Feeds
- Mixed Demolition Debris
- River Rock
- Crushed or Broken
- Asphalt

## Premium Features

- Egg-Crate Pan Support
- Large, Spherical
- Structure
- Greased Bearings
- Individual Bearing
- Cast or Fabricated
- Cartridges
- Grizzly Bars

## Models/Sizes

- 40x10x1
- 46x20x2
- 58x20x1
- 40x12x1
- 52x17x1
- 58x20x2
- 40x16x1
- 52x20x1
- 64x24x1
- 40x16x2
- 52x20x2
- 64x24x2
- 46x16x1
- 52x24x1
- 46x20x1
- 52x24x2

## Other Considerations

- Low Price Guarantee
- Minimal Lead Times
- Off-the-Shelf Parts
- Nationwide Distribution
- One Year Warranty



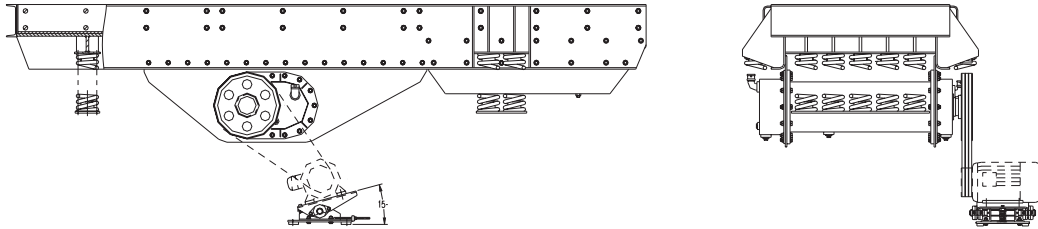
Trio Engineered Products, Inc. 128 Schabarum Avenue • Irwindale, CA 91706

Ph: (626) 851-3966 • Fx: (626) 851-9526 Web: [www.trioproducts.com](http://www.trioproducts.com) Email: [info@trioproducts.com](mailto:info@trioproducts.com)



# VIBRATING GRIZZLY FEEDERS

Engineers and Manufacturers of Washing, Vibrating and Crushing Equipment



## Vibrating Grizzly Feeders

Feeders Sizes	Bearing Size (mm)	Max Feeding (in) (mm)		Production Capacity (tph)	Operating Speed (rpm)	Power (hp) (kw)		Machine Weight (lbs) (kg)	
		in	mm			hp	kw	lbs	kg
40" x 10'	90	25"	600	350-550	600-800	15	11	8,000	3629
40" x 12'	90	25"	600	350-550	600-800	20	15	8,500	3856
40" x 16'	90	25"	600	400-600	600-800	25	18.5	10,500	4763
46" x 16'	90	30"	750	450-650	600-800	25	18.5	11,000	4990
46" x 20' (x1 & x2)	90	30"	750	450-650	600-800	30	22	14,500	6577
52" x 17'	90	35"	900	500-750	600-800	40	30	14,000	6350
52" x 20' (x1 & x2)	110	36"	914	500-750	600-800	40	30	18,000	8165
52" x 24' (x1 & x2)	130	36"	914	500-750	600-800	40	30	19,000	8618
58" x 20' (x1 & x2)	130	36"	914	550-850	600-800	40	30	19,000	8618
64" x 24' (x1 & x2)	130	36"	914	750-1000	600-800	60	45	22,100	10000

## Dimensions

Call for details!



Trio Engineered Products, Inc. 128 Schabarum Avenue • Irwindale, CA 91706

Ph: (626) 851-3966 • Fx: (626) 851-9526 Web: [www.trioproducts.com](http://www.trioproducts.com) Email: [info@trioproducts.com](mailto:info@trioproducts.com)