



DEWATERING SCREEN

Up to 300 TPH

- Achieve **moisture content as low as 10%** for a saleable product in less than a day.
- Deeper bed depth allows screens to remove more moisture and retain **highest percentage of saleable product**.
- Aggressive throw allows for higher feed tonnage and **faster drying cycles**.
- Urethane screen sidewalls allow for additional **dewatering along the sides** of the bed.

FEATURES



SCREEN URETHANE SIDE WALLS



DUAL ELECTRICAL VIBRATORS



WATER DISCHARGE



RECYCLE WATER LINE



STEEL COMPRESSION SPRINGS



10% MOISTURE CONTENT

DRIVE

- Electric vibrators (adjustable counterweights)
- Adjustable high g-forces
- Unbalanced motors
- Centrifugal force

SCREEN DECK

- Bed angle: -5° to +5°
- Replaceable snap-deck urethane screens
- Bolt-on urethane screen liners

STANDARD

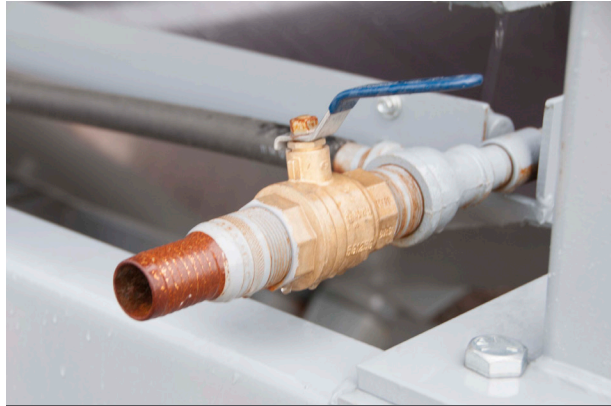
- Steel compression springs
- 1" steel motor mount
- Rigid 1/2" A36 steel welded frame
- Stationary frame
- Side liners with screen openings allows for larger surface for drainage

OPTIONS



PORTABLE PACKAGING

- DISCHARGE CHUTE
- SPRAY BARS



SPRAY NOZZLE FOR DISCHARGE CLEANOUT

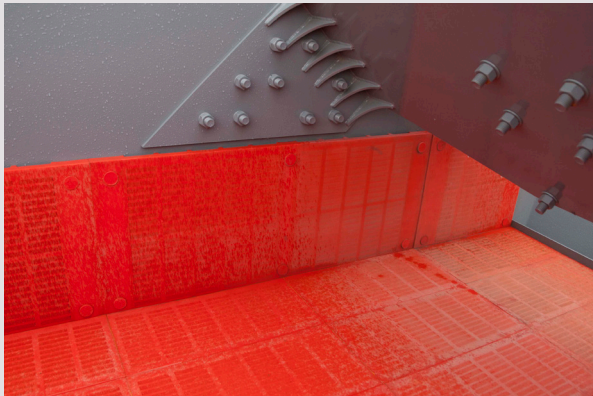
- SUPPORT LEGS
- FEED BOX LINING



DISCHARGE CHUTE

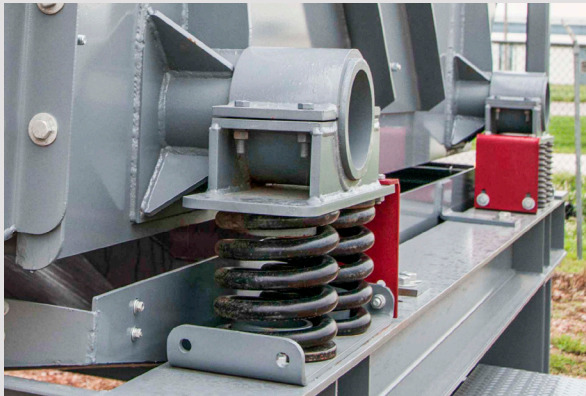
- PORTABLE PACKAGE: TIRES, HITCH, LANDING GEAR AND BREAKAWAY

IN-STOCK PARTS



SCREEN PLATES AND LINERS

- VIBRATOR GREASE
- SCREEN PLATES



COMPRESSION SPRINGS

- SCREEN LINERS
- SPRAY BARS



SPECIAL GREASE FOR VIBRATORS

- COMPRESSION SPRINGS

SPECIFICATIONS

DEWATERING SCREEN				
Dewatering Screen	Screen (mm x m)	Screen Area TPH (MT)	HP (kw)	Weight (kg)
DS-488	48" x 8' (1,220 x 2.4)	32 / 100 (29.0 / 100)	(2) 7 (5.2)	4,500 (2,041)
DS-6010	60" x 10' (1,525 x 3.0)	50 / 200 (45.4 / 200)	(2) 10 (7.5)	6,500 (2,948)
DS-7212	72" x 12' (1,828 x 3.6)	72 / 300 (63.3 / 300)	(2) 12.5 (9.3)	9,500 (4,309)

PHOTO GALLERY

