



MATERIAL HANDLING SOLUTIONS GUIDE

BUILDING SOLUTIONS TOGETHER



ABOUT TRIO'S MATERIAL HANDLING SOLUTIONS



TRIO Engineered Products Inc continues to grow as a manufacturer of material handling equipment for the aggregate, mining, recycling, and mineral industries. Our company pursues the core goals of product improvement, quality, and availability to what we hope is the best value in processing equipment available anywhere in the world. We value our customer relationships and work hard to ensure that ownership of TRIO equipment is a beneficial one. Our loyal customers include producers of all sizes, from privately held family companies to publicly traded multinationals.

All of our customers enjoy a high standard of personal service and excellent responsiveness. Our smaller size helps us respond more quickly and personally when compared to our larger competitors. Our commitment to customer service begins at the initial purchase and continues consistently throughout the operating life of the equipment. Our company's owners remain involved in all facets of the business and are available to help in any situation. Decisions are made quickly, and every effort is made to keep our customers up and running.



TRIO products employ the most current design and technical expertise. Innovative engineering, advanced geometry and superior manufacturing generate a range of durable, productive, highly-efficient and cost-effective equipment for the aggregate and mining industry. TRIO's machines are built for easy maintenance and a long working life in extreme conditions. All TRIO products are competitively priced and backed by the company's one-year warranty and continuing service commitment.



Contact TRIO Today for More Information

Phone: +1 626 851 3966

Email: info@trioproducts.com

12823 Schabarum Ave, Irwindale CA 91706 USA

TRIOProducts.com

PRODUCT DEVELOPMENT & ENGINEERING



TRIO's international team of mechanical engineers continues to invest time and resources into improving our current line and the development of new products. Using a combination of feedback from the field, customer insight, and continual R&D efforts, our engineers and manufacturing staff work hard to produce reliable, productive, quality mining and quarry equipment. In addition to securing our very first patent for an innovative log washer shaft configuration, our company also has several additional international patents pending on other product innovations.

With more than 150 different sizes of machinery spread across a dozen different machinery categories,

there is consistent effort to upgrade existing designs, while also adding new features and sizes that suit the market demands.

TRIO often accepts custom orders for will-fit machines as well as machines with specific duties and purposes. With an engineering staff comprised of more than twenty product design engineers working each day with current 2D and 3D design software, our team continues to move our products forward in the international marketplace.



TRIO's main corporate office and US warehousing facility is located just outside of Los Angeles in Irwindale, California. There is a separate warehouse and yard in Birmingham, Alabama for additional customer support in the Eastern United States. Our European team, based at a facility in Central Ireland, provides sales and service support to distributors and end users across the European Union and Eastern Europe. Our Shanghai facilities serve as both the production centers for the entire organization and as the base for our domestic China and Southeast Asia sales staff.

TRIO Material Handling Division also boasts well-equipped custom manufacturing facilities in Adelanto, California. Our capabilities

include custom design, fabrication and sourcing of a vast array of equipment. We service distributors, dealers, end-users, and OEMs around the world. We design and build one of the industry's most diverse lines of conveyors—from single 18" belt feeders to complete plants and overland systems stretching for miles.

With quality products, parts, services and some of the fastest lead-times in the industry, we respond to our customers' needs with precise, efficient, and competitively-priced solutions.



UNITED STATES: IRWINDALE, CA

TRIO's main office and warehousing facility is located just outside of Los Angeles in Irwindale, CA. This warehouse and yard inventories parts and equipment for distributor and end user customers located in the Western Hemisphere. We maintain a separate yard and warehouse in Birmingham, Alabama for additional customer support in the Eastern US.

CHINA: SHANGHAI

TRIO's production facility is located near Shanghai, China. It is comprised of two facilities totaling more than 280,000 square feet of machining, fabrication and production space and employs more than 450 personnel in management, engineering, production, quality control, logistics and customer service.

UNITED STATES: ADELANTO, CA

TRIO Material Handling Division also boasts well-equipped custom manufacturing facilities in Adelanto, California.

ADDITIONAL LOCATIONS IN:

Alabama Dubai Ireland Chile
Miami Delhi Australia





Heavy duty truss, undercarriage, and axle designs. Standard belt widths from 24"-60" and lengths up to 150'. Custom engineered lengths and widths are available based on application.

Swing Axle

- Available in single and tandem axle
- Heavy duty tubular design.
- Safe—no axle extensions to pull out or swivel boxes to turn
- Hydraulic axle jacks and power travels are available.

Primary Function:

- Fixed Radial Stackers: No portable requirements

- Pit Portable Radial Stackers: Can be moved around the pit by using a loader
- Road Portable Radial Stackers: All road portable stackers will have the required functions; Lights, Brakes, 5th Wheel Hitch, and folds if required based on length
- Self-Contained Portable Radial Stackers: Available in a 500 TPH 30"x80' PRSC with Diesel/Hydraulic Controls

Transportation:

- Economical container shipment to global destinations
- All portable functions are available based on conveyor width and length.



Standard Equipment	
Class II Drives	2 Ply or 3 Ply Belt
Backstop	Anchor Pivot Plate
Heavy Duty Pulleys	Manual Raise
Heavy Duty Bearings	Manual Raise
CEMA C Idlers	Tow Eye

Available Options	
Belt Scraper	Light Packages
Manual Folds	Brake Packages
Hydraulic Folds	5th Wheel Hitch
Hydraulic Raise	Discharge Chute
Power Travels – Hyd./Electric	Wrap Drives
Hydraulic Axle Jacks	Gravity Take-ups
Walkway	



STACKABLES

TRIO Channel Design:

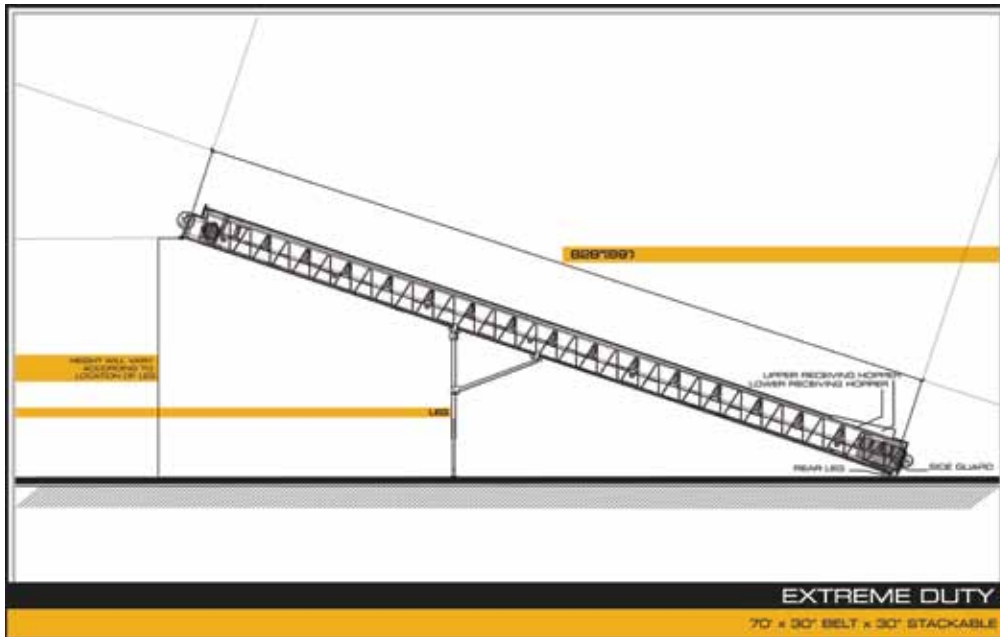
- Heavy duty construction and high quality welds. Better built and more versatile than most other stackable conveyors.

Primary Function:

- Transfer Conveyors: Add on head and tail support of various lengths
- Portable Radial Stacker: Add on undercarriage with swiveling wheels.

Transportation:

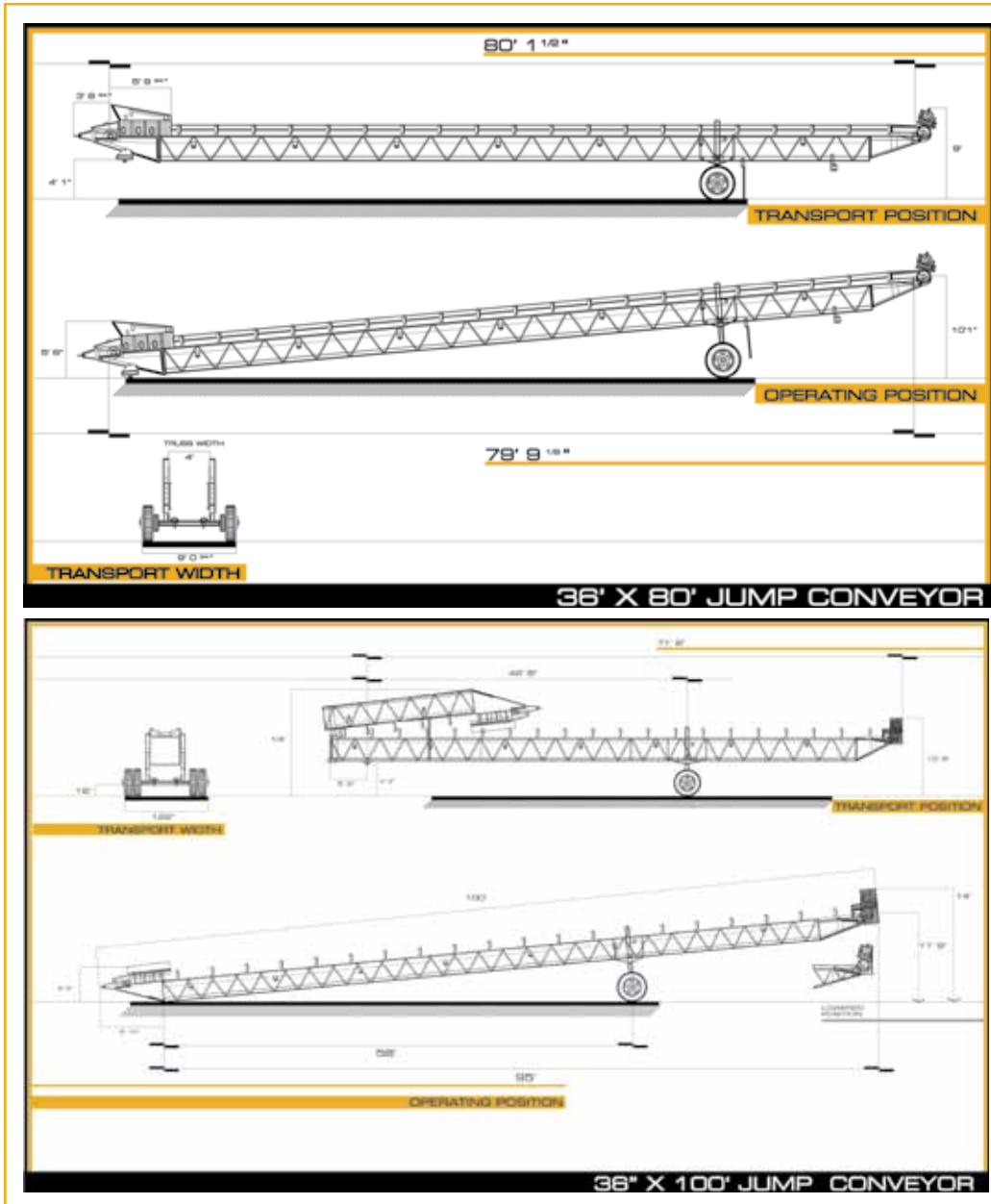
- Reduced freight cost
- Economical container shipment to global destinations
- (6) conveyors per truck load
- (3) conveyors per truck load with undercarriages



Standard Equipment	
Class II Drives	
Backstop	
Heavy Duty Pulleys	
Heavy Duty Bearings	
CEMA C Idlers	
2 Ply or 3 Ply Belt	

Available Options	
24" to 42" Belt Widths	Undercarriage
Lengths from 20' to 60'	Tow Eye
Belt Scraper	5th Wheel Hitch
Radial Rec. Hopper	





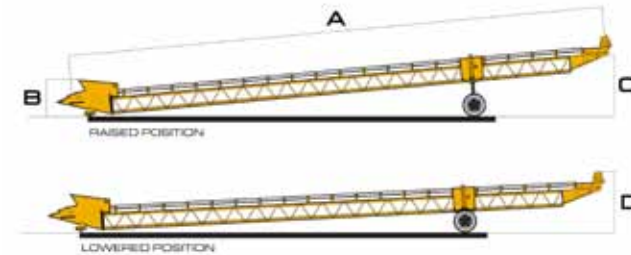
- Heavy duty truss design. Available in lengths from 80-100 feet and in belt widths of 24-42 inches. Custom lengths and widths are available based on application

Transportation:

- Economical container shipment to global destinations
- Folds can be added for road transport

Primary Function:

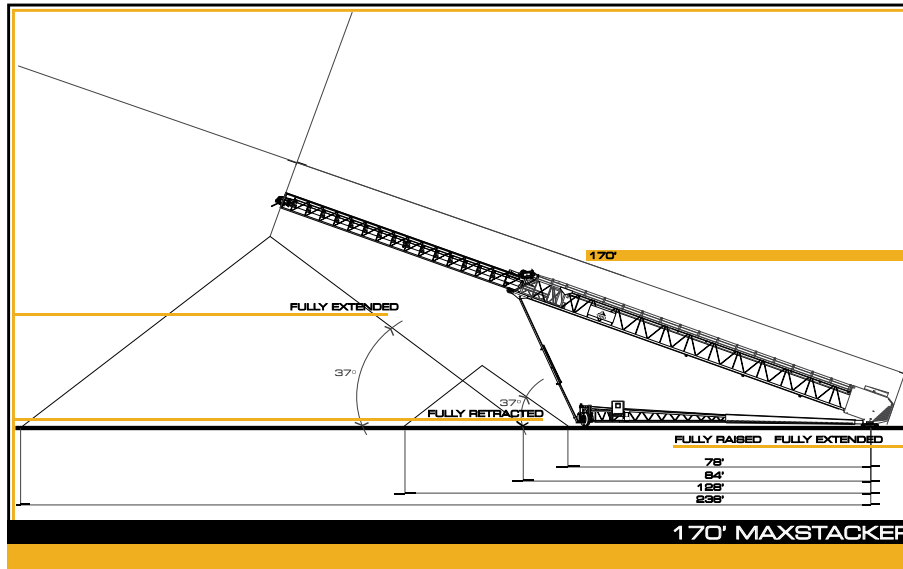
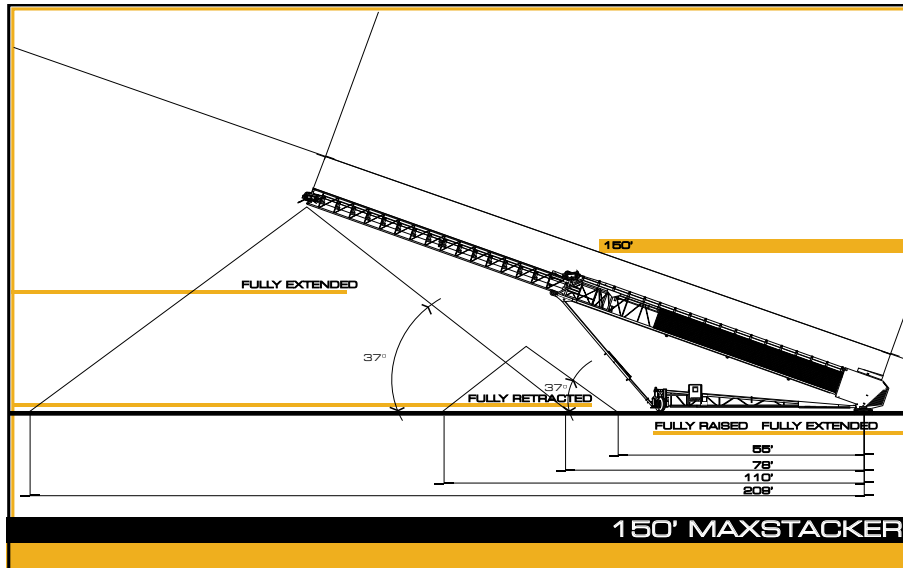
- Stationary Transfer Conveyors: Add on head and tail support of various lengths
- Portable Transfer Conveyors : Add on strut axle
- Telescoping conveyors: Discharge heights can be designed to feed all brands of telescoping conveyors.



Standard Equipment	
Class II Drives	
Heavy Duty Pulleys	
Heavy Duty Bearings	
CEMA B or CEMA C Idlers	
2 Ply or 3 Ply Belt	

Available Options	
Belt Scraper	Strut Axle Undercarriage
Radial Rec. Hopper	Tow Eye
Road Portable Package – Brakes, Lights, 5th Wheel Hitch	Discharge Chute

MAXSTACKER TELESCOPING CONVEYOR



- Heavy duty truss, undercarriage, and axle designs. Standard belt widths from 36"-42" and lengths from 130' to 190'.
- Swing Axle
- Heavy duty tubular design.
- Safe – no swivel boxes to turn or expensive hydraulics to maintain
- Hydraulic axle jacks and power travels are available

- Custom Applications: The telescoping functions can be adapted to many different applications

Transportation:

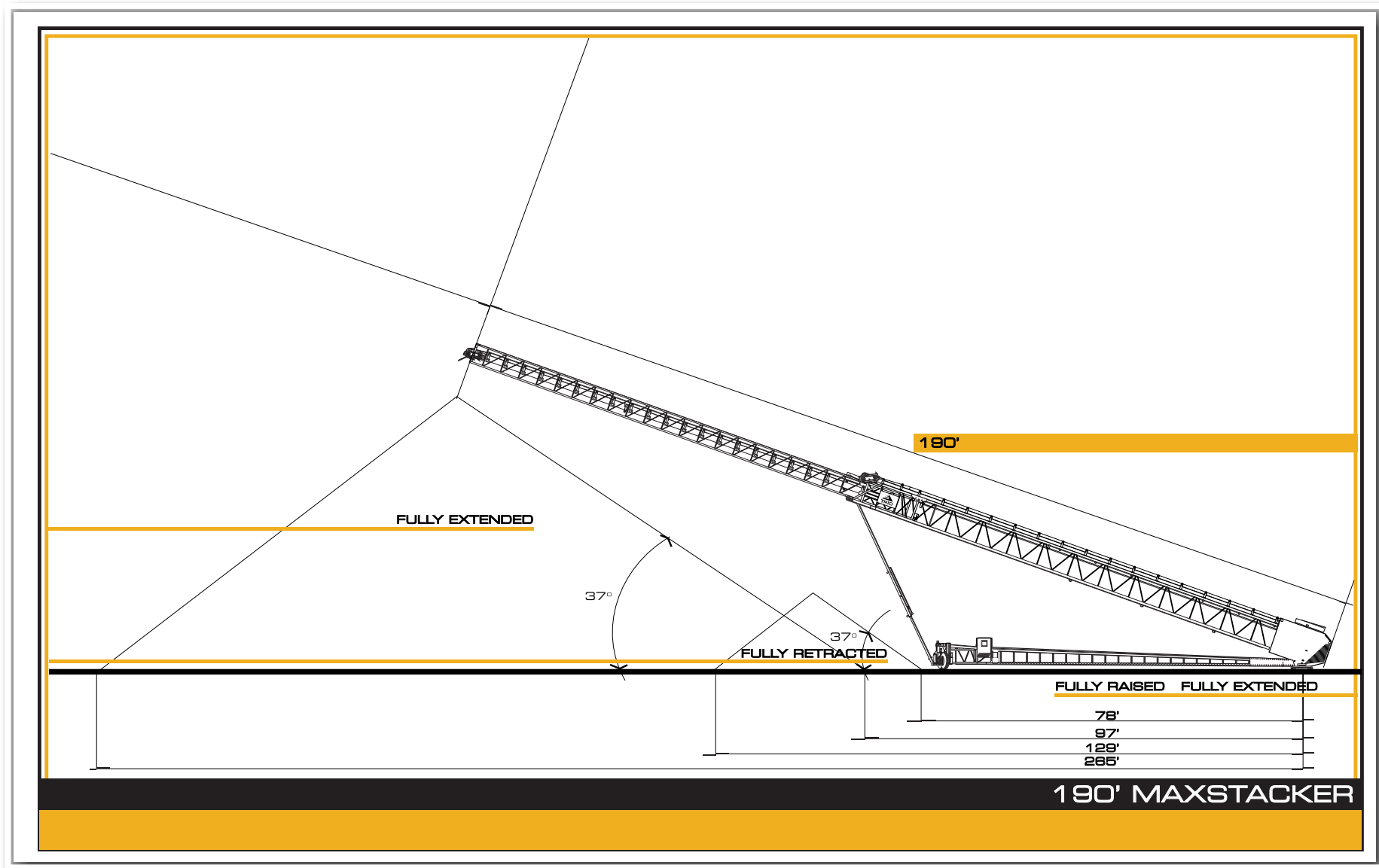
- Economical container shipment to global destinations
- All portable functions are available for all standard MaxStacker Conveyors

Primary Function:

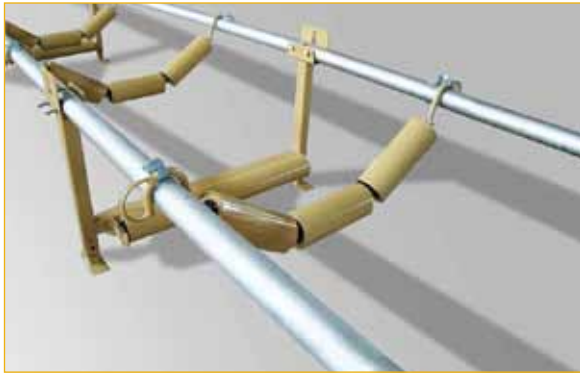
- Precision Stock Piling: Smart-Stack™ Automation can be used to create partial or fully desegregated stockpiles.
- Ship & Barge Loading: The MaxStacker functions great for all ship and barge loading applications when the remote option is utilized
- Storage Facilities: The MaxStacker can be also be used to maximize material storage yards from aggregate to coal.

Standard Equipment	
Class II Drives	Anchor Pivot Plate
Backstop	Radial Rec. Hopper
Heavy Duty Pulleys	Tow Eye
Heavy Duty Bearings	Counterweight
CEMA C Idlers	Hydraulic Raise
Belt Scraper	Hydraulic Axle Jacks
3 Ply Belt	Hydraulic Power Travel
Radial Rec. Hopper	Honda Power Unit

Available Options	
Smart-Stack™ Automation	
Manual Wireless Remote	
Automated Wireless Remote	



SUSPENDED CONVEYORS

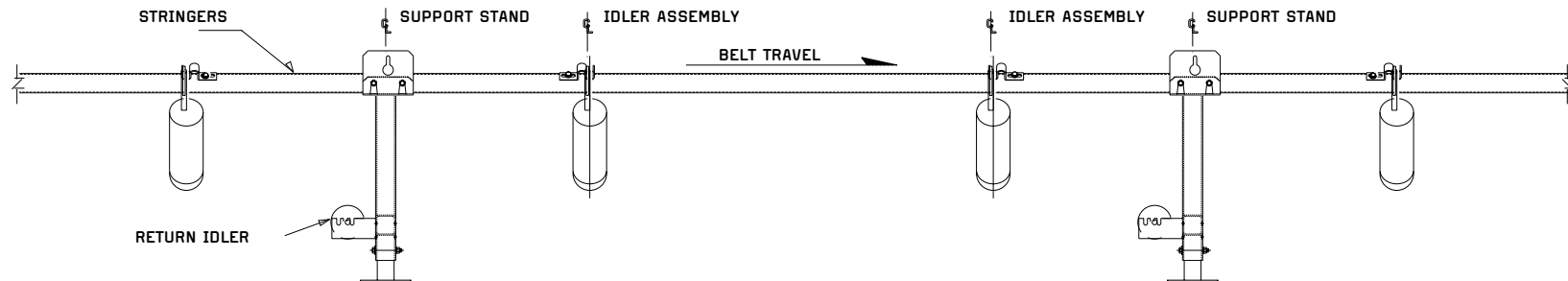


Features:

- 5" idlers available in 24"/30"/36"/42"/54"/60" widths
- Hinged construction
- Galvanized stringers with ribbon or cast saddle
- Ball bearing catenary rolls with labyrinth seal design
- Stand alone, heavy duty skid frame requiring no foundations
- Rugged stools with detachable, adjusting legs, stringer supports and integral return hangers
- Custom designed drive heads and take up units available to suit application
- Return rolls with 20 or 25 mm shafts and bearings
- 5" (127mm) and 6" (152mm) diameter rollers
- Easy transportation, installation and maintenance
- Robust construction

Benefits:

- One-year warranty
- Continuing service commitment
- Global distribution
- Rapid delivery
- Off-the-shelf parts
- Superior quality
- Advanced materials & processes
- Improved service life of critical components
- Lower maintenance & operating costs





TRIO's reliable and rugged overland conveyor systems are used by mineral processing companies world wide. TRIO brings a unique mix of custom engineering, high quality, and exceptional price to every installation, working closely with companies to design systems for their unique needs. The systems often save costs over rail or truck transportation.

With a variety of belt widths and the capacity to build systems to withstand the most adverse climates, an overland conveyor system is often the most effective way, ton-for-ton, to move bulk material over long distances.

Trio offers standard and custom engineered overland conveyor systems in both channel and catenary configurations. Channel offers a robust, slightly easier to install design comprised of 6" or 8" side rails and adjustable legs. A catenary system comprised of galvanized tubes and adjustable legs is also offered. Head (drive), tail, and belt take-up sections can be engineered to for any production rate

or elevation requirement. The systems can also be designed to work with grasshopper transfer sections at the loading or discharge ends to maximize flexibility.

TRIO Channel Design:

- Heavy duty manufactured channel with bolt in cross members and support stands.

TRIO Catenary Design:

- Tubular design with supports stands and ICC catenary idlers.

Primary Function:

- Channel/Catenary: Designs can be used to transport material when stackables or jump conveyors are no longer economical. Low cost alternative to transporting material by truck.

Transportation:

- Economical container shipment to global destinations

Standard Equipment	
Class II Drives	
Heavy Duty Pulleys	
Heavy Duty Bearings	
CEMA B or CEM A C Idlers	

Available Options	
24" to 48" Belt Widths	Tower Take-up
Belt Scraper	Conveyor Belt
Gravity Take-up	

FEED SYSTEMS



Portable Feed Hoppers

- Heavy duty steel beam design
- Designed to feed material consistently into crushing and screening plants

Standard Equipment:

- 9'x14' top opening
- Available in 30" or 36" belt widths
- CEMA rated idlers
- Electrical panel if VFD controls

Options:

- Manual or Hydraulic Grizzly
- Remote Control
- Impact Idlers
- Road Portable Package



Reclaim Tunnels

- TRIO has created a heavy duty rectangular line of tunnels to fit any application
- Eliminate costly material handling
- Great alternative to using loaders and feed hoppers
- Lower installation costs than galvanized and pre-cast tunnels

Features:

- Belt feeders or pan feeders
- Walkway – one side or both
- Emergency stop switches
- Bolt together design
- Stand widths 8' 10' 12'

Truck Unloaders

- The TRIO mobile truck unloader is design for portability and quick set up
- Eliminates costly double handling of material

Features:

- 48" Belt Width
- 1000 TPH Capacity
- Road Portable
- Heavy-Duty Removable Grate
- Discharge Hood
- Landing Legs
- Additional Guarding

3-Bin Feed Systems

- TRIO Batch Plant Feed System – Designed to feed portable concrete batch plants
- Eliminates multiple loads since all (3) hoppers and all (3) conveyors move as one unit

Features:

- (3) 9x14 Hoppers
- 1/4" Hopper Construction
- Adjustable Flow Gates
- Tandem axle with (8) tires on budd wheels
- Adjustable Legs on all Hoppers
- The conveyors are offered in several different combinations to fit the customer's needs



MODELS	MAGNET SIZE (W X L) INCH	MM	Weight LBS	KG	Required Power	
					HP	KW
Self-Cleaning						
CRP 30	30"x36"	762x915	1996	905	3	2.2
CRP36	30"x36"	762x915	1996	905	3	2.2
CRP36	36"x42"	915x1067	3600	1633	3	2.2
CRP42	42"x48"	1067x1219	4750	2155	5	4
CRP48	48"x54"	1219x1372	6144	2786	5	4
CRP54	54"x60"	1372x1524	7400	3357	5	4
Stationary						
CRPS30	30"x36"	762x915	1000	454	N/A	N/A
CRPS36	36"x42"	915x1067	2000	907	N/A	N/A
CRPS42	42"x48"	1067x1219	3000	1361	N/A	N/A
CRPS48	48"x54"	1219x1372	4000	1814	N/A	N/A

Permanent magnets offer an economical ferrous removal solution. TRIO's powerful self-cleaning permanent magnets are suspended overhead, mounted in heavy-duty steel frames and traversed by a heavy-duty stainless steel armored belt running on two pulleys. The magnets require no electric power and the belts can be driven either by electric or hydraulic power.

ELECTRO-MAGNETS



MODELS	MAGNET SIZE (W X L) INCH	MM	Weight LBS	KG	Required Power HP	KW
Self-Cleaning						
CR36	36"x42"	915x1067	5281	2395	5	3.6
CR42	42"x48"	1067x1219	6200	2812	5	3.6
CR48	48"x54"	1219x1372	7155	3245	5	3.6
CR54	54"x60"	1372x1524	9407	4266	7.5	5.5
CR60	60"x66"	1524x1676	12000	5443	10	7.5
CR66	66"x72"	1676x1829	14400	6532	15	11.2
Stationary						
CRS36	36"x42"	915x1067	4200	1905	N/A	N/A
CRS42	42"x48"	1067x1219	4600	2087	N/A	N/A
CRS48	48"x54"	1219x1372	5400	2449	N/A	N/A
CRS54	54"x60"	1372x1524	6200	2812	N/A	N/A



For efficient work in heavy-duty applications, nothing can compare to the power of the magnetic field created by an electro-magnet. TRIO's electro-magnets are available in self-cleaning and stationary variations, variable strengths and wattage and feature stainless steel armor-clad belting and rectifiers in NEMA enclosures.



TRIO has extensive experience serving the following industries:

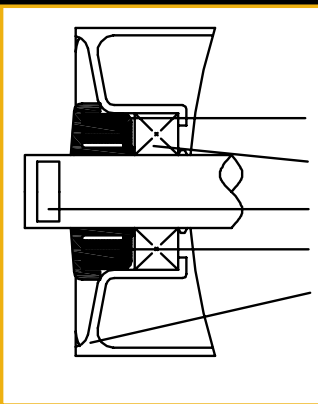
- Aggregate Production
- Recycling / Bio Mass
- Mining
- Concrete Production
- Coal, Coke and Sulfur Handling
- Remote Control
- Specialized Material Handling

TRIO offers a wide range of engineering:

- Concept Drawings
- Complete Process Plant Layout
- Conveyor and Structural Design
- 2D & 3D Drawings



IDLERS



Quadruple horizontal labyrinth seal.

Double sealed ball bearing.

Broached solid shaft holds rolls tight to frame.

Grease filled clearances protect bearings.

Recessed deep drawn head continuously welded inside shell.

Using proven seal and can designs and heavy-duty frames, these idlers are ideal for medium duty aggregate applications. The line, currently comprised of 4" B Idlers and 5" C idlers, is widely available and is being used by both end users as well as large OEM conveyor manufacturers. The "Sealed for Life" bearings eliminate the need for any maintenance. The idlers are also interchangeable with a number of other manufacturer's products.

Features:

- Industry-preferred recessed end disk eliminating roll-to-end disc separation
- Grease-filled deep labyrinth seal helps eliminate contaminants within bearing
- Exterior shield provides a barrier and keeps contaminants from bearing cavity
- Precision ground lifetime greased ball bearings with positive lip contact seals
- Heavy-duty rollers
- Heavy-duty center and end stands
- Complies with CEMA idler dimensional criteria and load ratings
- Ridged self-cleaning welded steel frame
- Broached shaft to add frame stability
- Sealed-for-Life design
- Head welded inside shell
- Stamped center and end brackets
- Precision deep drawn head
- Wide range of belt widths
- 20° and 35° troughing rolls
- Return idlers with drop or riser brackets

Benefits:

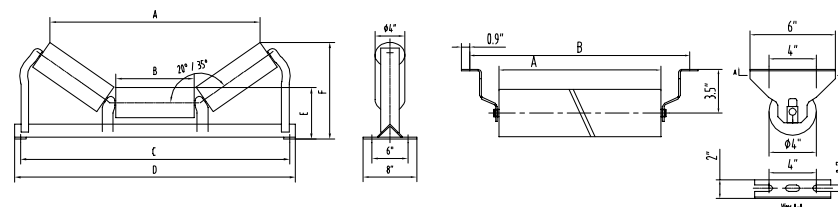
- One-year warranty
- Continuing service commitment
- Global distribution
- Rapid delivery
- Off-the-shelf parts
- Superior quality
- Advanced materials & processes
- Improved service life of critical components
- Lower maintenance & operating costs

4" Type B Troughing Idlers

Belt Width (Inch)	Idler Number	Idler Weight (LBS)	A	B	C	D	E	F
18	B35-18	30	19 1/8	7	27	29	7 1/8	11 1/4
24	B35-24	35	24 1/2	9	33	35	7 1/8	12 1/2
30	B35-30	39	30 1/16	11	39	41	7 1/8	13 5/8
36	B35-36	45	35 7/16	13	45	47	7 1/8	14 3/4
18	B20-18	29	21 5/16	7	27	29	7 1/8	9 5/8
24	B20-24	34	27 3/16	9	33	35	7 1/8	10 3/8
30	B20-30	37	33 3/16	11	39	41	7 1/8	11
36	B20-36	44	39 1/16	13	45	47	7 1/8	11 3/4

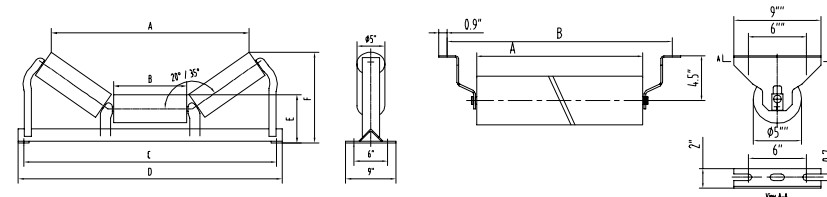
5" Type C Troughing Idlers

Belt Width (Inch)	Idler Number	Idler Wt. (LBS)	A	B	C	D	E	F
18	C35-18							
24	C35-24	46	24 1/2	9	33	35	8 3/8	13 1/2
30	C35-30	53	29 7/8	11	39	41	8 9/16	15
36	C35-36	58	35 1/8	13	45	47	8 9/16	16 1/8
42	C35-42	68	41 3/8	15	51	53	8 9/16	17 1/2
48	C35-48	75	52	17	57	59	8 9/16	18 3/4
54	C35-54	81	50 7/8	19	63	65	8 5/8	19 1/2
60	C35-60	86	58	22	69	71	8 5/8	21 1/8
18	C20-18	40						
24	C20-24	43	27 1/8	9	33	35	8 3/8	11 1/2
30	C20-30	52	32 7/8	11	39	41	8 9/16	12 1/2
36	C20-36	57	38 9/16	13	45	47	8 9/16	13 1/8
42	C20-42	64	45 3/8	15	51	53	8 9/16	14
48	C20-48	70	52	17	57	59	8 9/16	14 7/8
54	C20-54	77	55 3/4	19	63	65	8 5/8	15 1/4
60	C20-60	81	63 5/8	22	69	71	8 5/8	16 1/8



4" Type B Return Idlers

Belt Width (Inch)	Idler Number	Idler Weight (LBS)	A	B
18	BR-18	15	21	27
24	BR-24	18	27	33
30	BR-30	23	33	39
36	BR-36	25	39	45



5" Type C Return Idlers

Belt Width (Inch)	Idler Number	Idler Weight (LBS)	A	B
18	CR-18	20	21	27
24	CR-24	24	27	33
30	CR-30	28	33	39
36	CR-36	32	39	45
42	CR-42	36	45	51
48	CR-48	40	51	57
54	CR-54	44	57	63
60	CR-60	48	63	69

SPEED REDUCERS



Helical gear tooth design and twin tapered bushings make these reducers the optimal gearboxes for conveyors, mixers and packing machines.

Corrosion resistant, precision machined, ductile iron cast housings. Ribbed housing construction provides strong bearings and gearing support. Oil channeled to all bearings for superior lubrication. Double lip seals retain oil while locking out dirt. Reducer mounts directly on driven shaft, eliminating the need for coupling or chain drive, sliding motor base and support structure and avoiding all alignment problems.

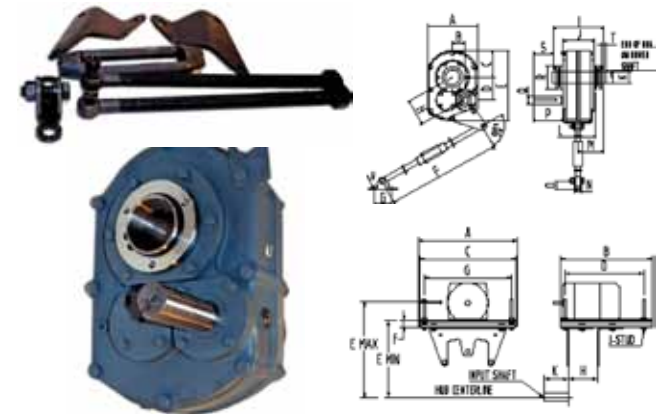
Features:

- Double lip seals retain oil while locking out dirt
- Helical gear tooth design maximizes the power transfer efficiency
- Twin taper bushings eliminate play between the reducer and shaft. No set screws to score, mark or gouge the shaft
- Reducer mounts directly on driven shaft, eliminating the need for coupling or chain drive, sliding motor base and support structure and avoiding all alignment problems
- Easy Installation: Insert shaft key and slide inboard bushing, reducer and outboard bushing into the device's input shaft.
- Position and tighten bushing mounting screws
- Easy Removal: Bushing screws double as jacking screws so no puller is required. Remove the bushing mounting screws and insert them into the tapped holes in the bushing flanges. Once tightened, the reducer should slide easily off of the shaft
- Flexibility: Mounting versatility enables these torque arm reducers to be positioned anywhere along the driven shaft in horizontal, vertical and inclined positions for greater installation ease

Benefits:

- One-year warranty
- Continuing service commitment
- Global distribution
- Rapid delivery
- Off-the-shelf parts
- Superior quality
- Advanced materials & processes
- Improved service life of critical components
- Lower maintenance & operating costs

Reducer Dimensions								
	2	3	4	5	6	7	8	9
A	8.38	9.25	10.38	13.13	15.13	18.75	20.25	22.63
B	2.14	2.33	2.76	3.04	4.09	5.11	6.03	6.59
C	4.09	4.84	5.50	6.56	7.56	9.38	10.03	11.31
D	3.75	4.17	4.79	5.67	6.73	8.3	9.5	10.81
E	11.41	12.88	15.13	18.31	21.31	25.94	28.25	31.69
F	26.94-32.94	26.94-32.94	29.19-35.19	29.19-35.19	29.19-35.19	29.44-35.44	30.00-36.00	30.00-36.00
G	3.00	3.00	4.00	4.00	4.75	4.75	7.00	7.00
H	4.32	4.78	5.53	6.43	7.88	9.74	10.25	12.66
I	7.32	9.22	9.98	10.52	11.53	12.85	14.03	14.12
J	4.5	5.63	6.13	6.31	6.88	7.75	8.37	8.12
K	1 15/16	2 3/16	2 7/16	2 15/16	3 7/16	3 15/16	4 7/16	4 15/16
L	2.82	3.30	3.14	4.45	4.57	4.69	5.85	5.66
M	3.68	4.52	4.79	5.05	5.73	6.38	7.04	7.04
N	1.25	1.25	1.44	1.44	2.75	2.75	4.00	4.00
O	1.06	1.06	1.75	1.75	2.00	2.00	3.13	3.13
P	3.59	4.34	5.57	5.74	6.08	6.35	7.11	9.65
R	4.06	4.38	4.81	5.63	6.13	7.25	7.75	8.75
S	2.22	2.34	3.44	3.44	3.73	4.31	4.31	6.63
T Min	1.25	1.50	1.75	1.81	1.81	2.06	2.06	2.44
U	0.44	0.44	0.50	0.50	0.63	0.75	0.75	0.75
Diam. Shaft	1.13	1.25	1.44	1.94	2.19	2.44	2.44	2.44
Keyed Shaft	.25x.13x2.50	.25x.13x2.88	.38x.19x4.06	.50x.25x4.50	.50x.25x4.50	.63x.31x4.75	.63x.31x5.38	.63x.31x7.75



Models/Sizes	
215	225
315	325
415	425
515	525
615	625
715	725
815	825
915	925

PULLEYS



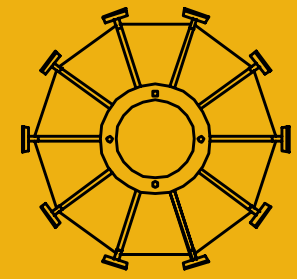
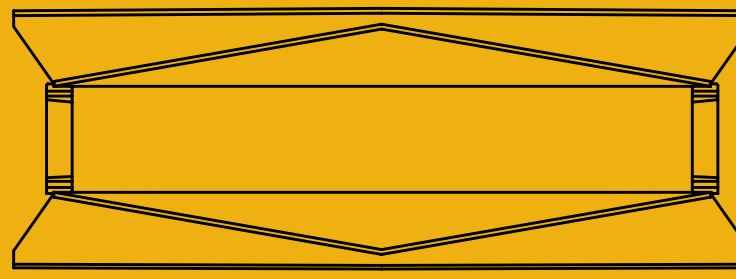
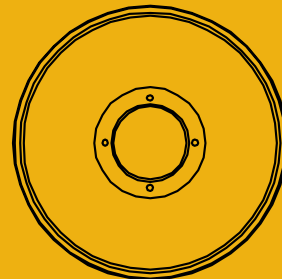
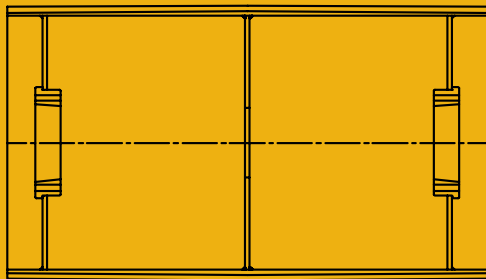
TRIO offers both head pulleys and heavy-duty fabricated tail pulleys. These heavy-duty pulleys use engineered end discs, standard XTB style bushings for attachment on shafting, machined crowns and vulcanized lagging.

Features:

- Heavy-duty fabrication
- Machined crowns
- Vulcanized lagging
- Heavy duty fabricated tail pulleys
- High strength end discs
- Standard XTB style bushings for attachment on shafting
- XT hubs
- Heavy duty flat bar wing design

Benefits:

- One-year warranty
- Continuing service commitment
- Global distribution
- Rapid delivery
- Off-the-shelf parts
- Superior quality
- Advanced materials & processes
- Improved service life of critical components
- Lower maintenance & operating costs



Crowned Lagged Drum Pulley

Dia.	Face Width	Hub	Weight LBS
8"	20"	25	66
8"	26"	25	86
8"	32"	25	106
8"	38"	25	127
10"	20"	25	80
10"	26"	25	101
10"	32"	25	129
10"	38"	25	153
12"	20"	30	218
12"	26"	25	90
12"	32"	25	122
12"	32"	25	153
12"	38"	30	181
12"	38"	25	179
12"	44"	30	214
12"	51"	30	204
12"	63"	30	288
14"	26"	30	347
14"	26"	25	160
14"	32"	25	196
14"	32"	30	199
14"	38"	25	234
14"	38"	30	243
14"	44"	30	241
14"	51"	35	314
14"	63"	35	391
16"	26"	25	174
16"	26"	30	180
16"	26"	35	189

Crowned Lagged Drum Pulley

Dia.	Face Width	Hub	Weight LBS
16"	32"	25	252
16"	32"	30	235
16"	32"	35	248
16"	38"	30	243
16"	38"	35	256
16"	44"	35	277
16"	51"	35	319
18"	26"	30	234
18"	26"	35	243
18"	32"	35	250
18"	32"	40	278
18"	38"	35	285
18"	38"	40	301
18"	44"	40	325
18"	51"	40	413
20"	26"	35	268
20"	32"	40	287
20"	38"	35	325
20"	38"	40	478
20"	44"	50	541
20"	51"	50	551
24"	26"	40	440
24"	32"	40	518
24"	38"	45	645
24"	38"	50	622
24"	44"	50	756
24"	51"	50	859

Crowned Wing Tail Pulley

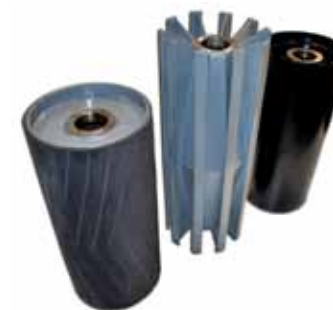
Dia.	Face Width	Hub	Weight LBS
8"	20"	25	66
8"	26"	25	86
8"	32"	25	106
8"	38"	25	127
10"	20"	25	80
10"	26"	25	101
10"	32"	25	129
10"	38"	25	153
10"	44"	30	218
12"	20"	25	90
12"	26"	25	122
12"	32"	25	153
12"	32"	30	181
12"	38"	25	179
12"	38"	30	214
12"	44"	30	204
12"	51"	30	288
12"	63"	30	347
14"	26"	25	160
14"	32"	25	196
14"	32"	30	199
14"	38"	25	234
14"	38"	30	243

Crowned Wing Tail Pulley

Dia.	Face Width	Hub	Weight LBS
14"	44"	30	271
14"	51"	35	330
14"	63"	35	414
16"	26"	25	198
16"	26"	30	185
16"	32"	25	220
16"	32"	30	228
16"	38"	35	266
16"	44"	35	317
16"	51"	35	361
18"	26"	30	222
18"	32"	35	280
18"	38"	35	310
18"	44"	35	356
18"	44"	40	362
18"	51"	40	440
20"	26"	35	253
20"	32"	35	310
20"	38"	40	364
20"	44"	40	428
20"	51"	40	497

Crowned Smooth Steel Drum Pulley

Dia.	Face Width	Hub	Weight LBS
10"	20"	25	66
10"	26"	25	77
10"	32"	25	87
10"	38"	25	98
12"	26"	25	110
12"	26"	30	111
12"	32"	25	123
12"	32"	30	128
12"	38"	30	139
14"	26"	25	139
14"	32"	30	168
14"	38"	30	177
14"	44"	30	183
16"	32"	30	267
16"	38"	35	304



Models/Sizes	
Belt Widths	Diameters
18"	8"
24"	10"
30"	12"
36"	14"
42"	16"
48"	18"
60"	20"
	24"

Other sizes available. Data for marketing purposes only. Please contact TRIO for product information.



TRIO PRODUCTS, INC
CORPORATE OFFICES

12823 Schabarum Ave
Irwindale, CA 91706
United States

Tel +1 626 851 3966 Fax +1 626 851 9526
info@trioproducts.com
trioproducts.com

TRIO CHINA, LTD
MANUFACTURING FACILITIES

4918 Liu Xiang Road
Shanghai 201809
China

Tel +86 21 39979708 Fax +86 21 39979660
info@trioproducts.com
trioproducts.com

ADDITIONAL LOCATIONS

Alabama	Ireland
Miami	Australia
Dubai	Chile
Delhi	